

BSM PRESENTER

VERSATILE DIGITAL SIGNAGE SIMPLIFIED



BSM PRESENTER SOFTWARE

COMPOSE REGIONS AND CONTENT

The BSM Presenter Software lets you tile the display in regions of different content. Each region can be filled with any type of supported media in any order. You can play a video followed by some images or a live captured video input and a webpage. The preview mode shows your composition and gives you the possibility to adjust your layout in realtime. You can create sync-points for each playlist item. If multiple players are in one network, the players having an equal sync-point in their composition will wait for each other to synchronize playback. Regions can always be modified during editing. The position of each region in the region list defines the visibility of overlapping regions (z-order). One primary region controls the timing of the composition: if its playlist has finished, the next composition is loaded or the current is replayed.

SCHEDULE

Your compositions can be scheduled to be played permanently or at certain times. Multiple compositions can be arranged to playback in a loop. A schedule of a day can be easily copied to multiple days until an end date.

STEADY MEDIA

Steady Media is a library for compositions that can be triggered on an external event to be immediately shown on the screen. The actual playing schedule is paused and the Steady Media composition is shown.

DISTRIBUTE

Schedules and Steady Media can be distributed directly to players in the local network or to a BSM PRESENTER CMS Server in the local network or through the internet.

SUPPORTED MEDIA

Video: MPEG1, MPEG2, H.264, AVC

Images: PNG (including transparency), JPG, BMP, GIF, TGA, TIFF

Webpages including Flash

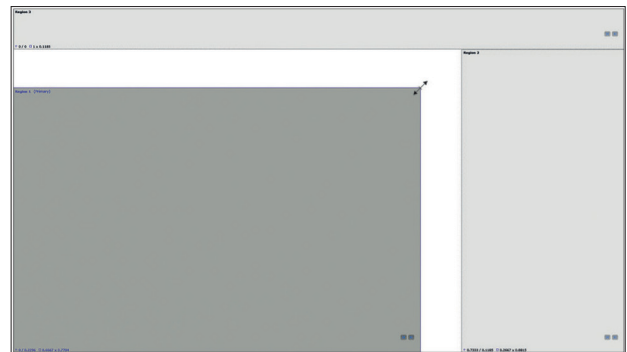
RSS feeds

Analog and digital clock

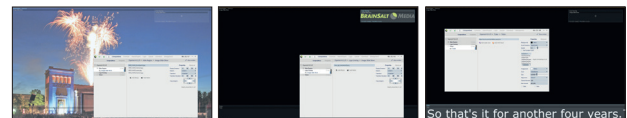
DVB-S/C transcoder to broadcast to network in preparation

Database access through C# Live Scripting function

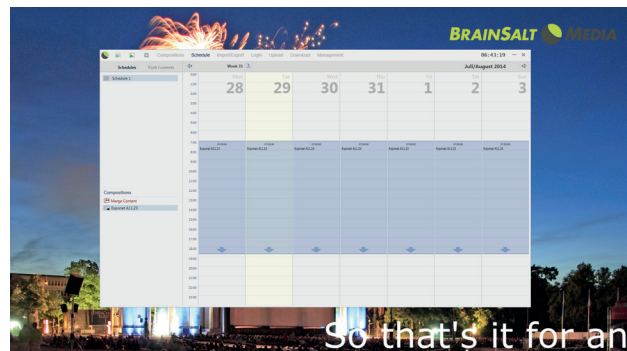
Arrange screen regions



Put content in regions



Schedule compositions



BSM PRESENTER HARDWARE



BSM PRESENTER 2013 FRONT VIEW



BSM PRESENTER 2013 BACK VIEW

BSM PRESENTER 2013

Player Hardware including Windows 7 Embedded
BSM Media Presenter Software installed, License Key installed
registered in Network, ready to use. Active Fan, 30 GB SSD,
1 x mini DP, 1 x mini HDMI 1.4a, Lan, 4 x USB, 1 x Stereo
Audio, Vesa Mount, External Power Supply 65W, Windows
Embedded Standard 7.0 64 Bit, 11.5 x 11.5 x 5 cm
Country of origin: Austria, Customs tariff number: 84718000

BSM PRESENTER OPTIONS:

BSM PRESENTER USB TV Capture device for BSM Presenter

Receives DVB-T and DVB-C, including CI slot.

BSM PRESENTER HOSTING FEE END CUSTOMER'S PLAYER

(IF USING BSM HOSTED CMS INTERNET SERVER!)

Fee for using the distribution network, dependent on end
customer's player count.

BSM PRESENTER HARDWARE



BSM PRESENTER 2013 - PASSIVE COOLING



BSM PRESENTER 2013 - PASSIVE COOLING

BSM PRESENTER 2013 - PASSIVE COOLING

Player Hardware including Windows 7 Embedded
BSM Media Presenter Software installed, License Key installed
registered in Network, ready to use. Passive Cooling, 30 GB
SSD, 1 x DVI-I, 1 x HDMI, 2 x Lan, 2 x Audio, 6 x USB, 2 x
COM, 1 x WLAN, 1 x Bluetooth, Vesa Mount, External Power
Supply 65W, Windows Embedded Standard 7.0 64 Bit, 196
x 285 x 33 mm (HxWxD)
Country of origin: Austria, Customs tariff number: 84718000

BSM PRESENTER HARDWARE



BSM PRESENTER 2013 - PASSIVE COOLING 4K

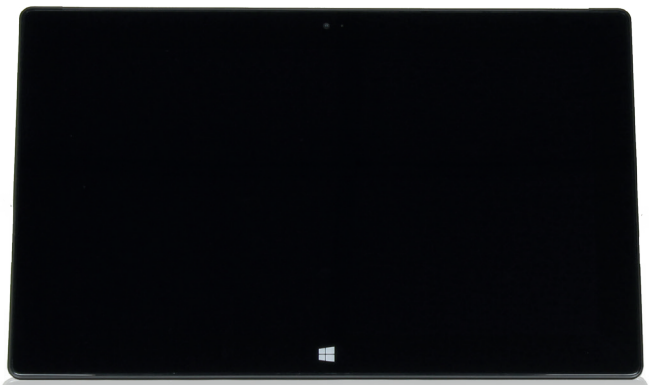
BSM PRESENTER 2013 - PASSIVE COOLING 4K

Player Hardware including Windows 7 Embedded
Supports QHD and 4K Displays through Displayport.
BSM Media Presenter Software installed, License Key installed
registered in Network, ready to use. Passive Cooling, 30
GB SSD, 1 x DVI-I, 2 x DP, 2 x Lan, 2 x Audio, 6 x USB, 4 x
COM, External Power Supply, Windows Embedded Standard
7.0 64 Bit, 215 x 225 x 175 mm (HxWxD), 3.5KG
Country of origin: Austria, Customs tariff number: 84718000

BSM PRESENTER HARDWARE



BSM PRESENTER 2013 - TABLET



BSM PRESENTER 2013 - TABLET

BSM PRESENTER 2013 - TABLET

Player Hardware including BSM Media Presenter Software installed, License Key installed, registered in Network, ready to use. 64 GB + LAN Adapter, Core i5-3317UM 2x 1.70GHz ULV, 4GB Ram, 64 GB SSD, Windows 8 Professional 64Bit, Mini DisplayPort, USB 3.0/WLAN 802.11b/g/n, MicroSD-Slot

10.6" WXGA Multi-Touch, 1920x1080, UBS LAN Adapter

Country of origin: Austria, Customs tariff number: 84718000

BSM PRESENTER CMS SERVER

The BSM PRESENTER CMS Server is used to organize and distribute content to groups of players in a local network or over internet. It keeps track of the status of the players and provides detailed system and health information.

PLAYER NETWORK, CONTENT DISTRIBUTION

The players can be organized in a tree-like topology; Content can be uploaded to every node of the tree. Players in that node or in a node beneath of that node will automatically download the new content. If necessary, content delivery can be restricted to certain times of the day (f.e. for nightly updates only).

USER MANAGEMENT

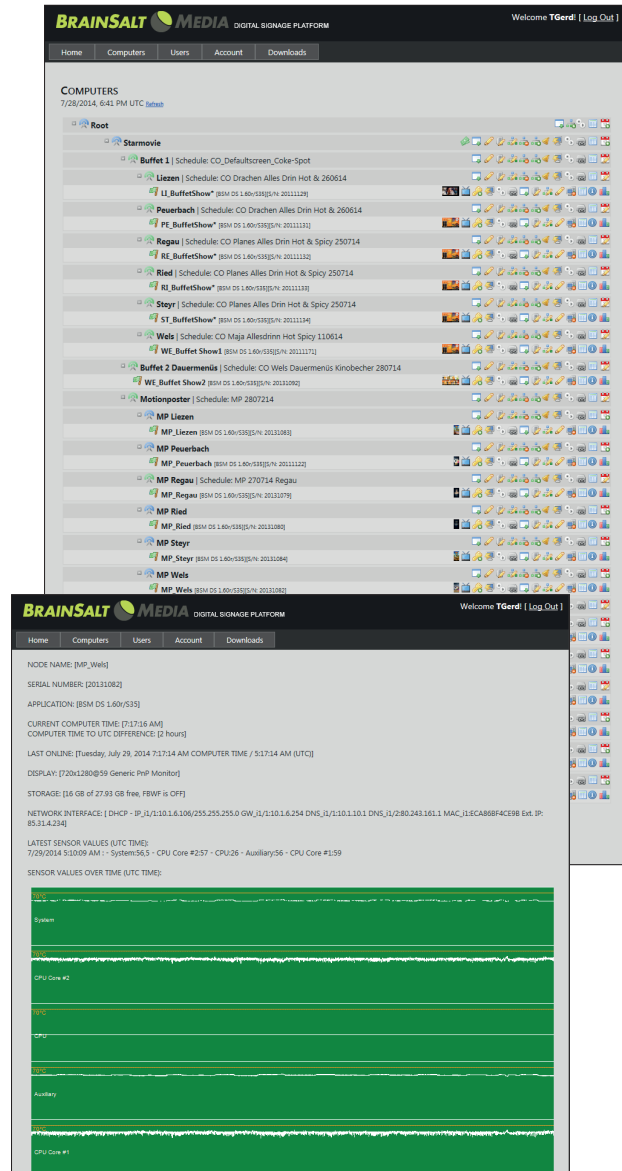
Users with different access levels and access nodes can be created. As example: a media creation user might only have the right to upload new content and set that active to a certain group, while an administrative user can move players to different groups, remote connect to it and change the group topology.

STATUS AND HEALTH TRACKING

Each player is in permanent contact to the CMS Server and is reporting its status. The information includes data like: network configuration, display resolution, storage status and temperature sensor values. Several notification events can be set, f.e. if a temperature exceeds a critical point or the player does not connect to the CMS server anymore, a warning email can be set out to the administrator.

REMOTE ACCESS

The CMS server also acts as a repeater for remote connections to a player connected through the internet. If an administrator wants to log into a player, the player is actively opening a remote control session to the CMS server and the remote control session is routed through the CMS server to the software on the administrator's computer. That way, router and firewall at the player's end do not need to be specially configured.



BSM PRESENTER CMS SERVER



BSM CMS SERVER FRONT VIEW



BSM CMS SERVER BACK VIEW

BSM PRESENTER CMS Server

CMS Software, 3U Rackmount, redundant Fans and Power Supply, Hardware Raid Controller, 2 x 1 GBit NIC, 10 TB Raid 5, Windows Web Server 2008, Microsoft SQL Server, 6 Core 2.66 Ghz, 12GB Ram, 30 GB System SSD
Country of origin: Austria, Customs tariff number: 84718000

